

# May-Bridge OWNERS MANUAL

## MAY-BRIDGE HARROWS

A Division of Ralph Bridge Chain Harrows Ltd.

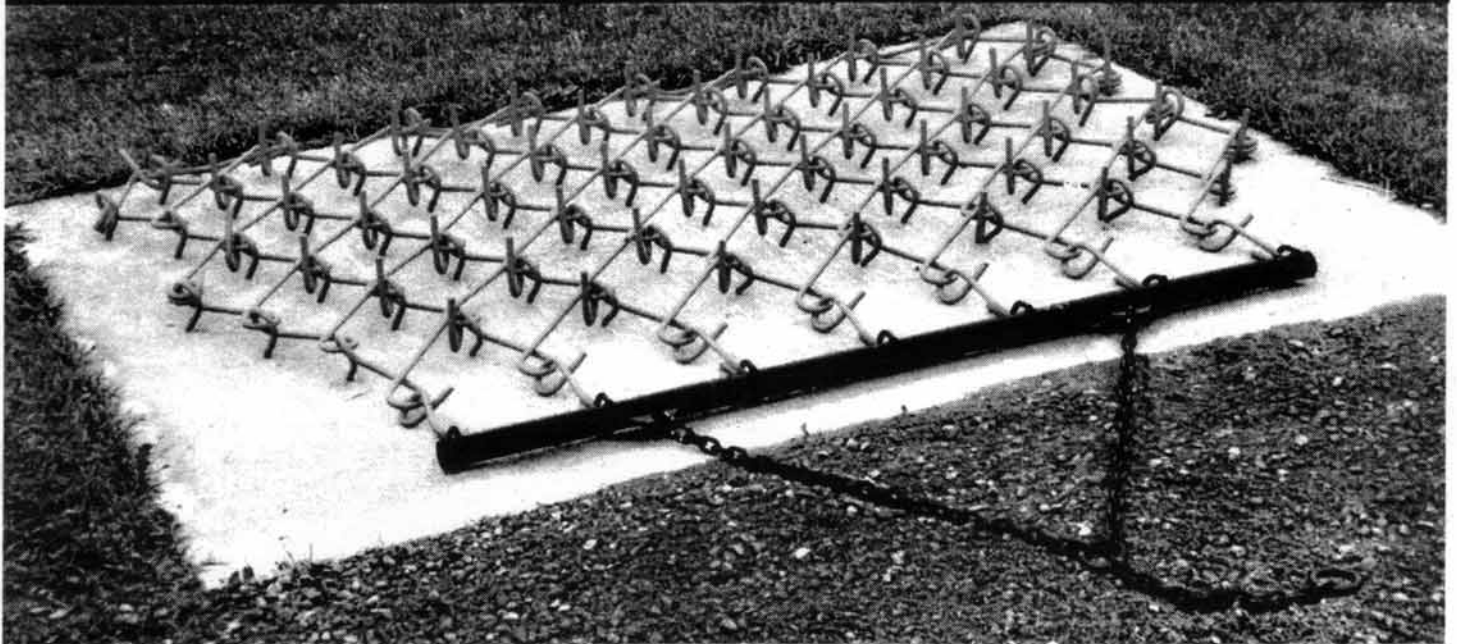
RR#5, Belwood Ontario NOB 1J0  
Tel: (519) 843-1959  
Fax: (519) 843-5614



For "Bridge" CHAIN HARROW  
"May Bridge" HARROW CADDY  
"Bridge" 3 Pt. Hitch LIFT FRAME

U.S. Patent 4,582,142  
Canada Patent 1,221,574

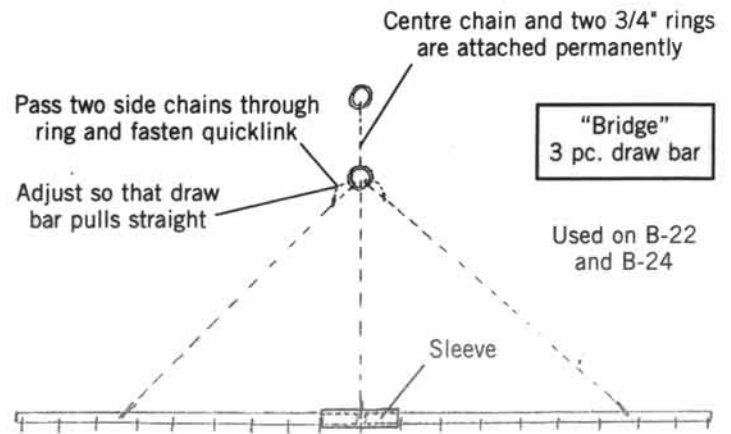
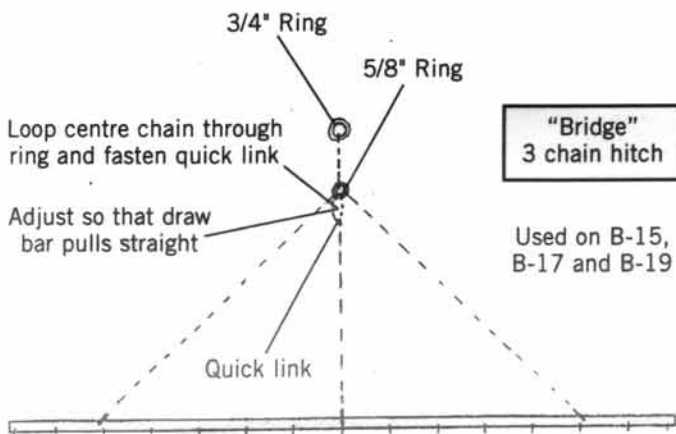
## The "Bridge" CHAIN HARROW



- Do not hitch other equipment or devices to the harrow
- Do not load weights on top of harrow

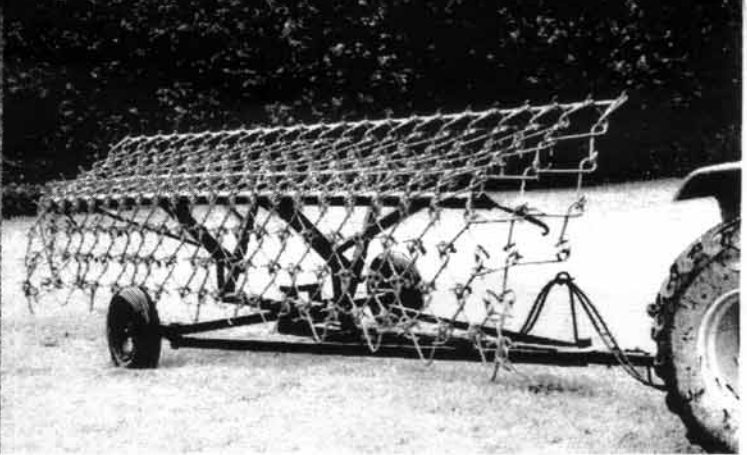
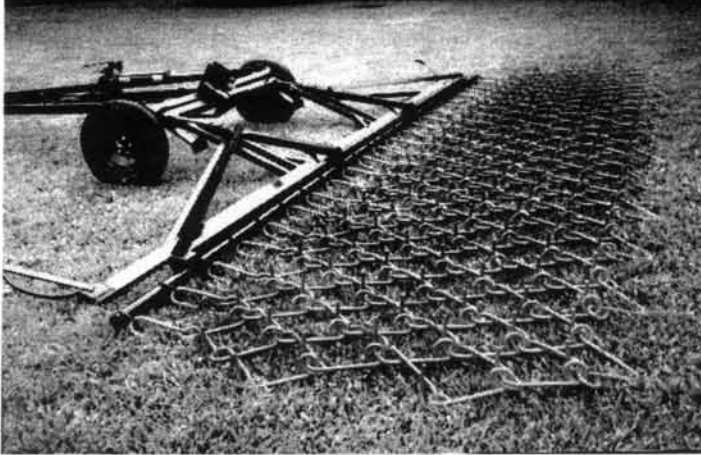
### SAFETY REMINDER

To avoid the danger of walking or driving over it, harrow should be stored where it can be seen, (beside fence or building) or where walking and driving is not likely (such as stone pile or wood pile). If stored in open area, it should be marked with stake or flag.



Hitch height may need to be higher on larger sizes. Hitch length increases as size increases

# "May Bridge" HARROW CADDY



Raise and lower harrow slowly, preferably with tractor running at idling speed.

Lower harrow into working position only while machine is moving forward.

While harrow is in use, make sure that the cylinder is fully extended to insure free movement in the pin slot, this will help to avoid damage in the event of a sudden up and down movement of the draw bar.

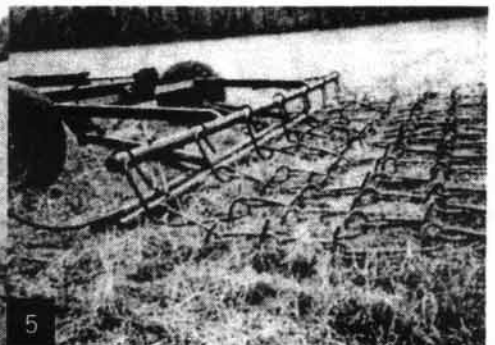
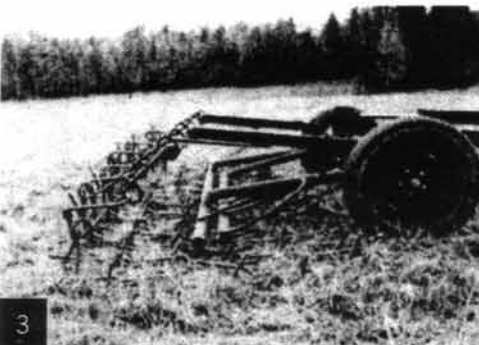
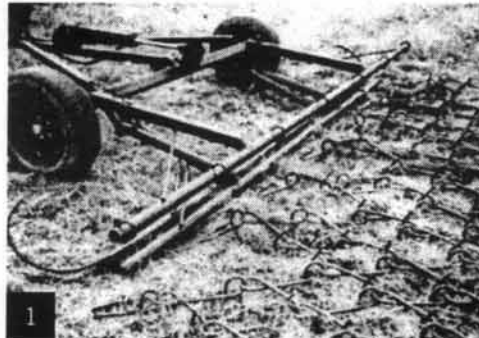
## SAFETY REMINDER

- Stand clear while machine is being operated
- Do not climb on machine
- Install safety pin before transporting
- Use anti-tipping device when not in use (on fixed model)

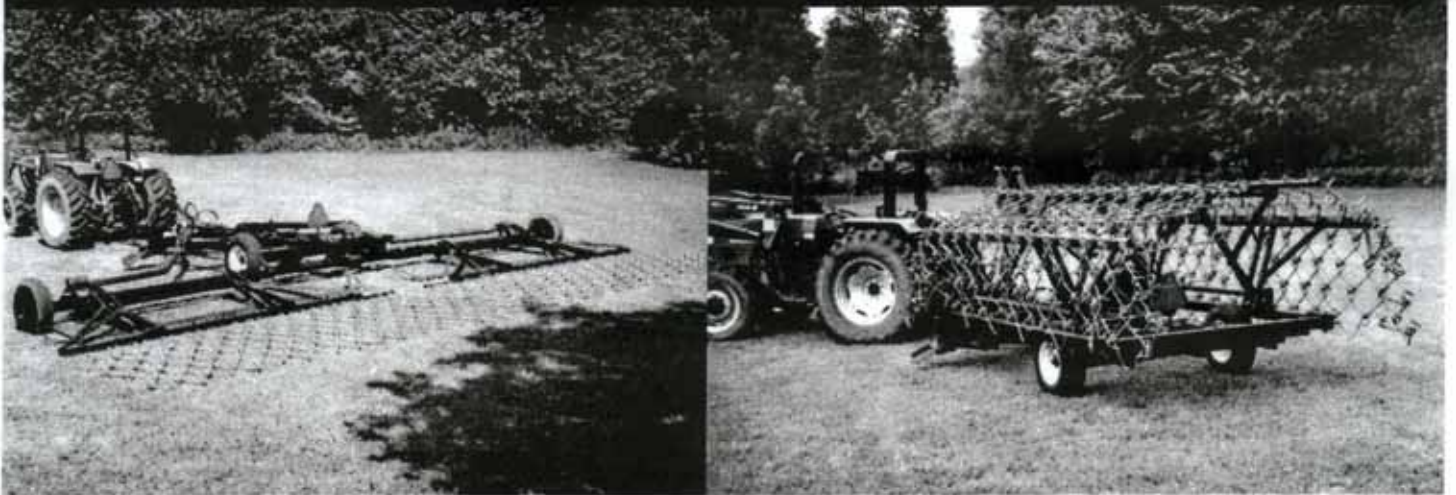
U.S. Patent 5,143,160  
Canada Patent 2,063,462

## REVERSAL PROCEDURE

1. Remove drawbar hooks
2. Tow caddy to back of harrow and back-up until wheels touch harrow
3. Attach the hooks over the top of the harrow
4. Activate the lift and harrow will follow
5. While moving forward, let the harrow down into its operating position

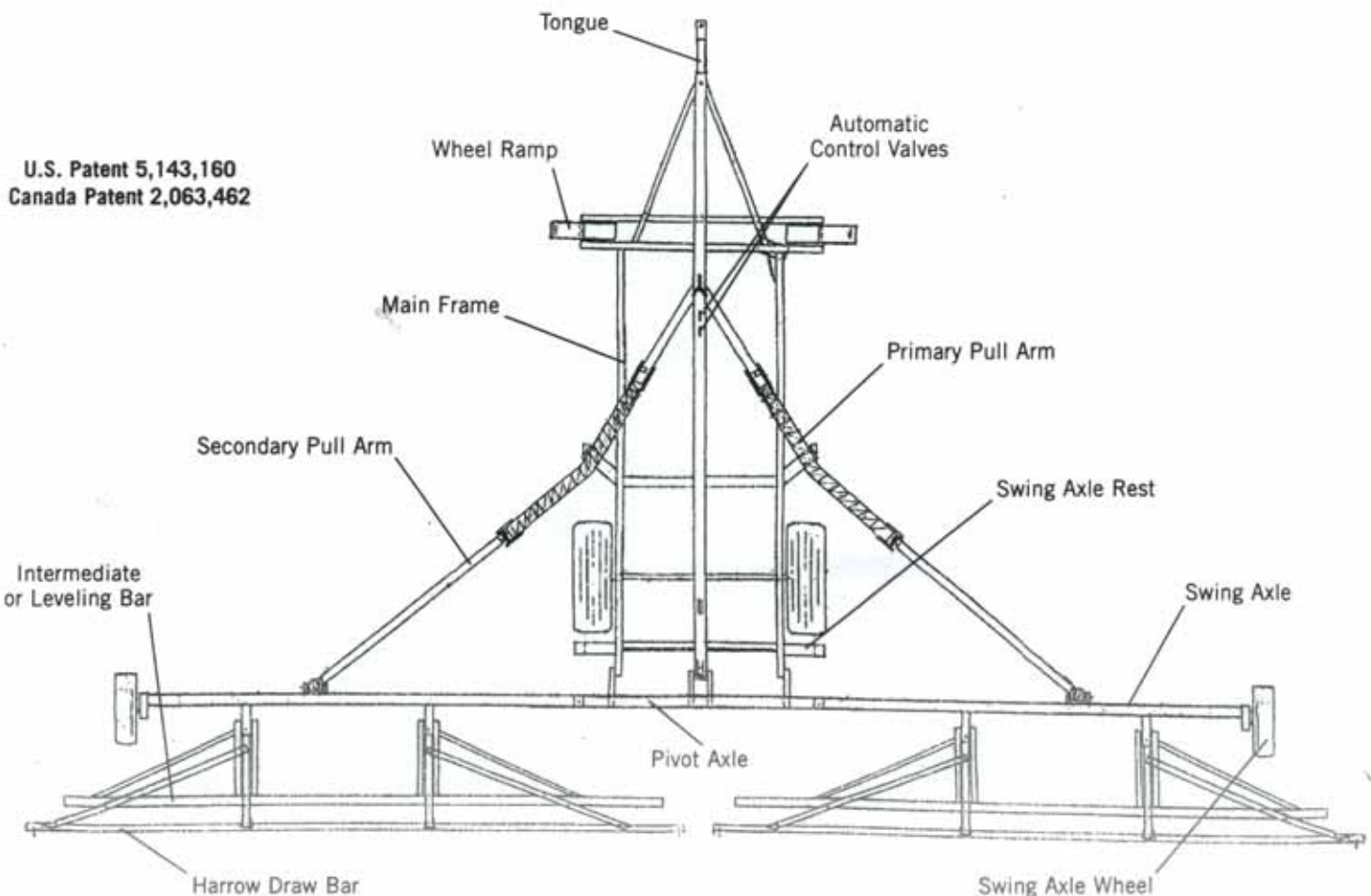


# "May Bridge" 3M CADDY



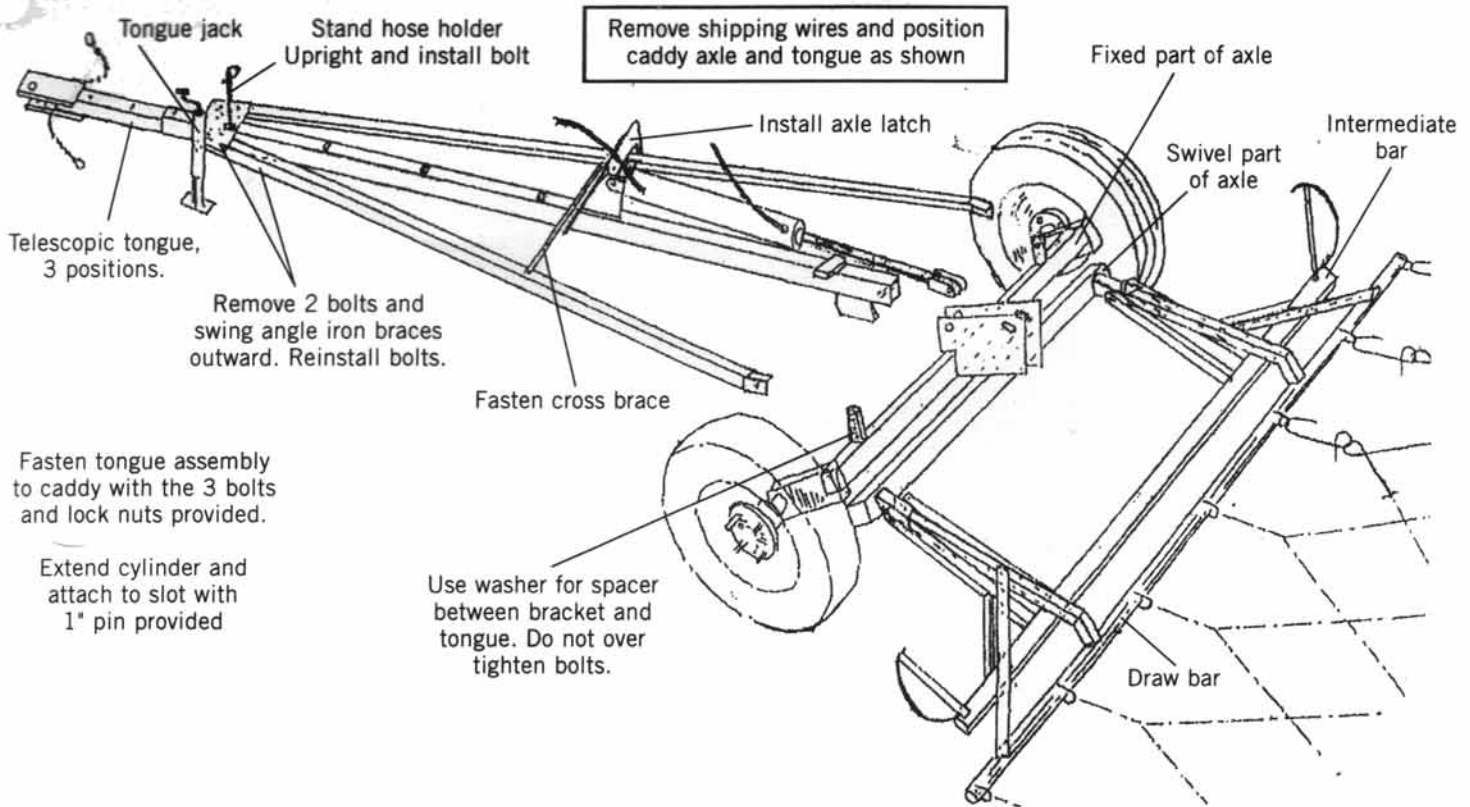
## OPERATING PROCEDURE

1. The transition to and from working position can be operated completely from the tractor seat, however it is not automatic, so operator must watch and control the operation slowly.
2. From transport to working position choose area not too rough or soft. Activate hydraulic controls and swing axes outward (extend cylinders completely). Activate second hydraulic circuit and let harrow down into working position while moving slowly forward (extend cylinder completely). Before proceeding check to make sure none of the harrow hooks have disconnected.
3. From working to transport position, stop machine and lift harrow into rolled up position. Swing both axes forward into transport position.

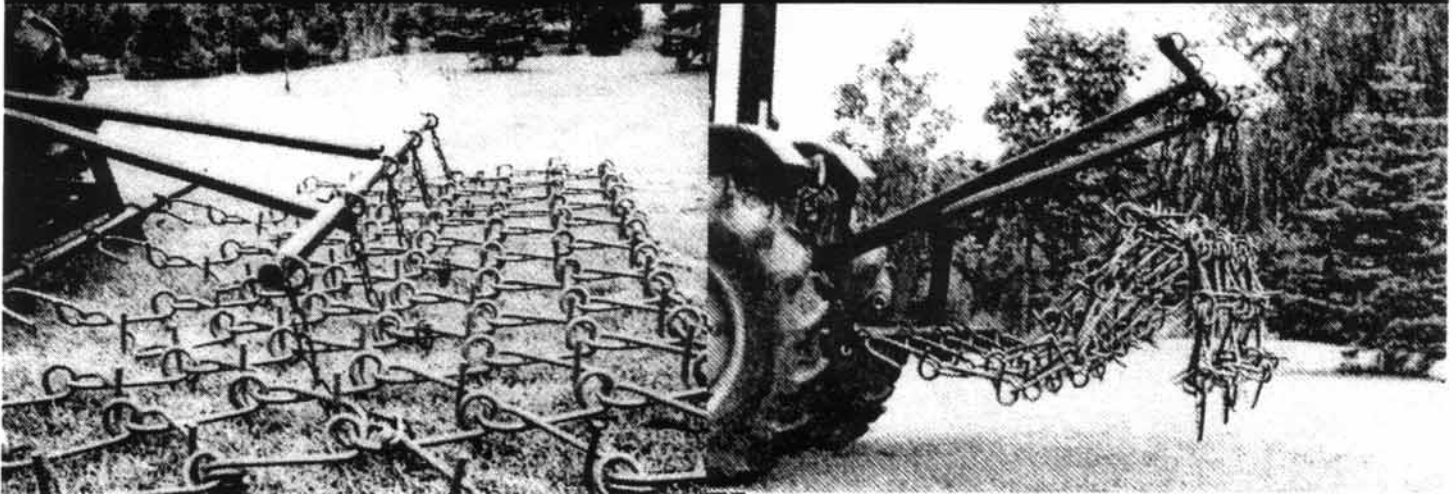




# "May Bridge" 2M CADDY ASSEMBLY



# The "Bridge" 3 Pt. Hitch LIFT FRAME



## ASSEMBLY PROCEDURE (using photos as a guide)

1. Attach complete A frame to tractor.
2. Attach front draw bar and rear lift bar to frame.
3. Adjust check chains on the lift arms of your tractor to control sway.
4. Hook chain harrow to front draw bar.
5. Drive tractor forward until harrows pull straight.
6. Attach drop chains to harrow using quick link provided, make sure that chains are hooked 3 complete rows from rear of harrows.
7. Adjust stop on hydraulic control lever so that proper height will be maintained each time lift frame is raised or lowered.

- Raised position should be set so that harrow clears ground sufficiently, but not too high, putting undo strain on lift chains.
- Lowered or working position should be set so that front draw bar is approx. 6" from ground and rear lift bar is approx. 14" from ground.
- The shoe under front draw bar is a guide only and after adjustments are completed should operate at approx. 3" from ground.

